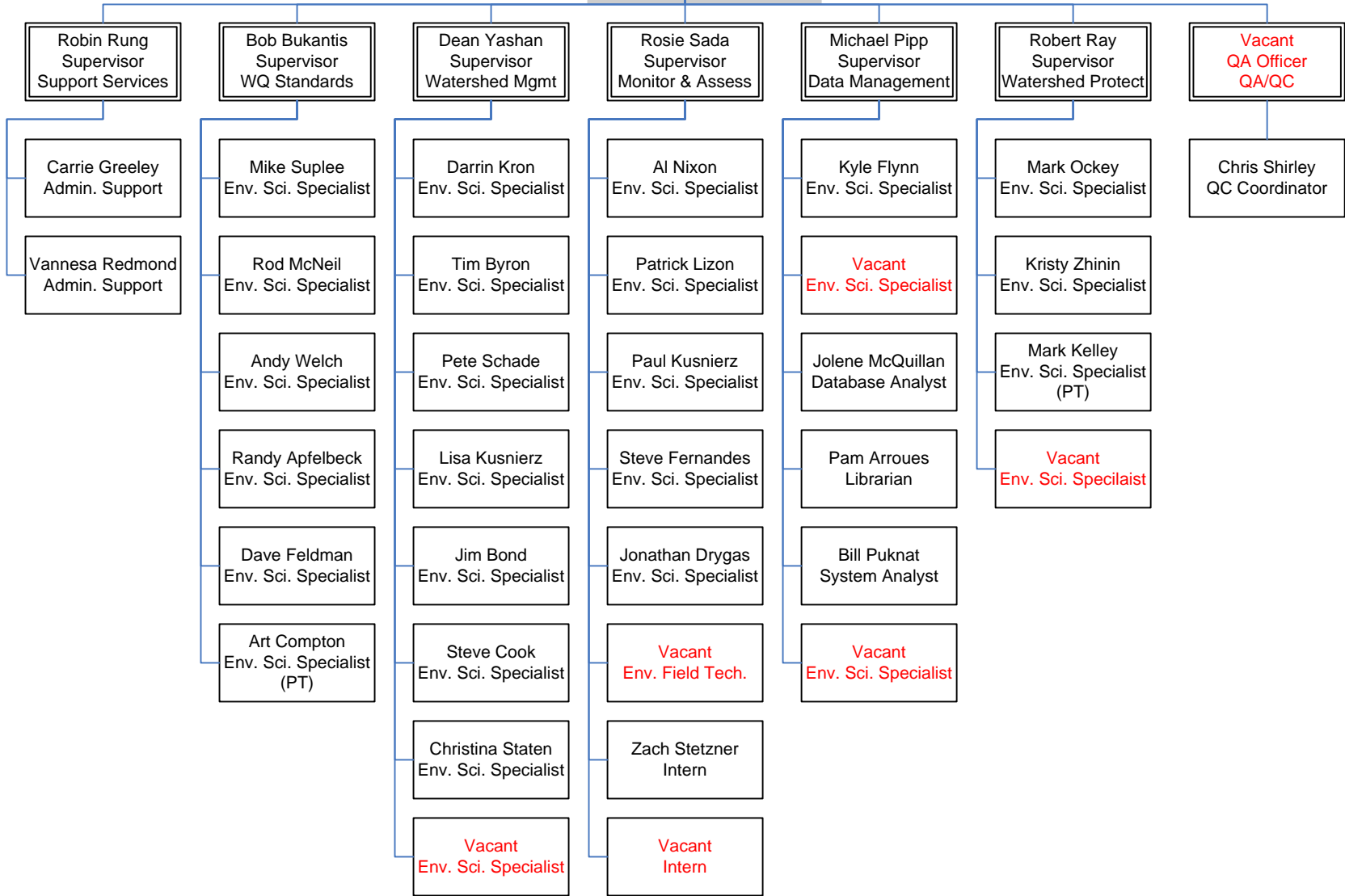


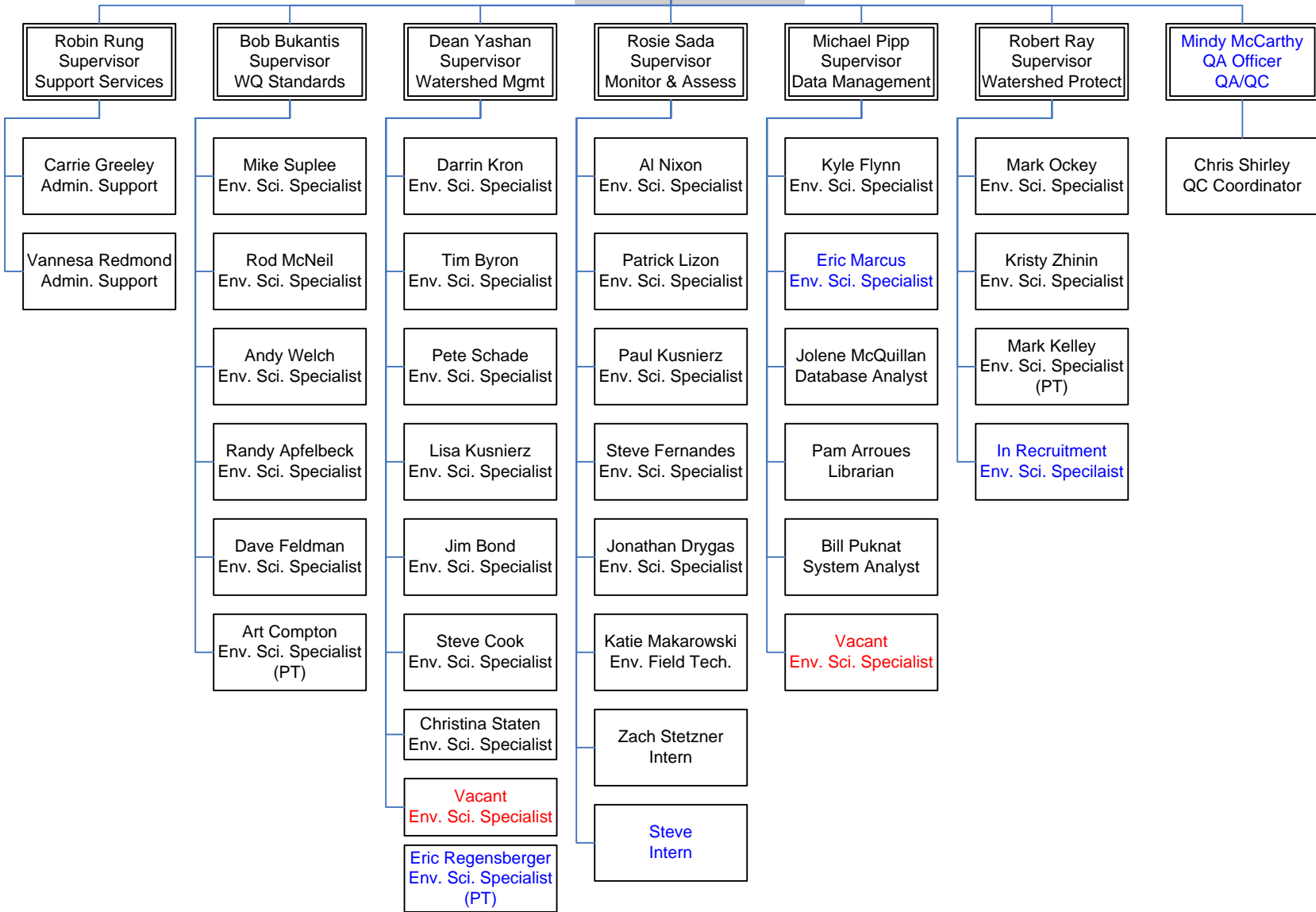
Current - 12/18/09

Mark Bostrom
Bureau Chief
Water Quality Planning



As of 01/04/09

Mark Bostrom
Bureau Chief
Water Quality Planning



2008 IR

- Background
 - 2006 IR EPA approved December 2006 (EPA agreed to delay due to consent decree)
- Focus of 2008 IR is waters in South Central MT (Powder, Tongue, Rosebud)
 - Public comment draft ready for release March, 2008.
 - Public comment April - June, 2009
 - Final Report submitted to EPA November 5, 2009
- For DEQ 2008 IR is final.

Recent Database Initiatives

- WARD System (Phase I)
 - Relational Database (Oracle platform)
 - Replaces DataRev7,8 (MS Excel) spreadsheet assessment records.
 - Connectivity to EPA's Assessment Database (ADBv2.1)
 - Linked to WQ Library (Oracle)
 - Improves overall data and workload management, water body tracking, and reporting capabilities
 - Listing/delisting

Recent Database Initiatives

- WARD System (Phase II, in progress)
 - Specific WQ Standards not attained
 - Segment splits/merges/retirements
 - TMDL Project Tracking (Bean counting)
 - Implementation Tracking

Monitoring Strategy

- EPA & DEQ collaborative effort
- Covers 2009-2019
- Basics (short term):
 - Monitoring resources to assist TMDL, WQ Standards development
 - Assessment Method revision
- Program redesign post 2012
 - Shift focus toward implementation
 - Monitoring fixed station, rotating basin, targeted

Assessment Method

- Issues identified from public comment (2004 – 2008) and DEQ lessons learned.
 - Sufficient Credible Data (SCD)
 - Existing and readily available data (no bounds, allows too much subjectivity to enter into assessments)
 - Data age issues (30 year old data driving decisions)
 - Bar too low (score of 6 incomplete assessments, low rigor for some parameters...OFTEN DOES NOT SET STAGE FOR TMDL)
 - Ordinal scoring too coarse (“water scores a high 2 for biology”)
 - No minimum sample sizes specified

Assessment Method

- Issues identified from public comment (2004 – 2008) and DEQ lessons learned.
 - Beneficial Use Determination (BUD)
 - Recent work in WQ Standards (EC/SAR, Nutrients, M/D/F, Biological indicators)
 - Limited guidance = inconsistencies
 - Single pass vs. Two Tiers
 - How to incorporate Natural?

Next Steps

- Inform STAG
- Develop work plan (DEQ work groups, STAG advisory role)
- Set-up public outreach & communication tool (Wiki site)
- Reform assessment process (Specific guidance)
- Present for public comment in 2010 IR

Questions/Comments

